



The Making Of

BLUEBIRD CHANDELIER

The BLUEBIRD CHANDELIER

*is the result of an encounter between
the companies VERRE L'ESSENTIEL,
contemporary glass makers and LUCIEN
GAU, fine bronze smiths.*

*This booklet shows the making of the glass
elements of the chandelier.*

VERRE L'ESSENTIEL

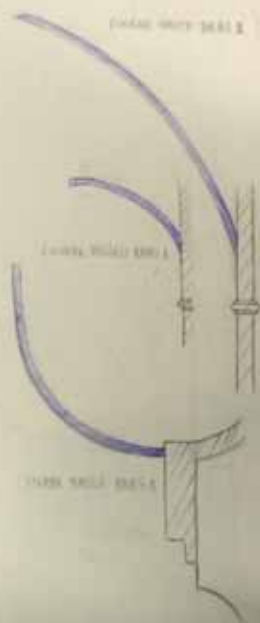
Phillippa Martin
&
Gwendoline Bonnet



“Through my artistic work I hope to make sensitive the link between the earth, the heart and the heavens by expressing their invisible dialogue. This link is at once material construction and spiritual openness. My works create a sensation of physical elevation and contemplative openness. I express my faith and my love of glass making through my glass chandeliers and unique blown pieces”.

Phillippa Martin

TIGRE (DROITE)



F

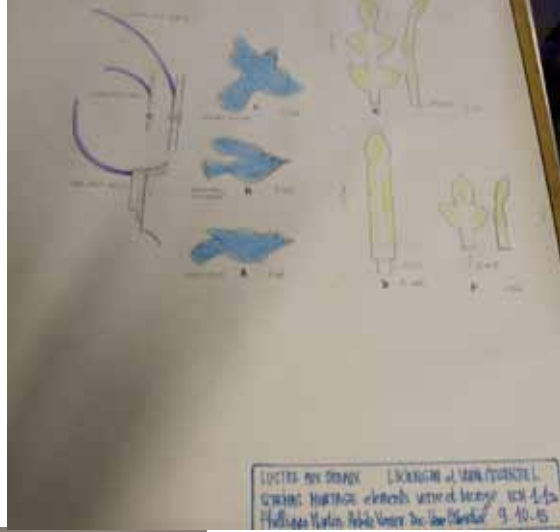


VERRE L'ESSENTIEL

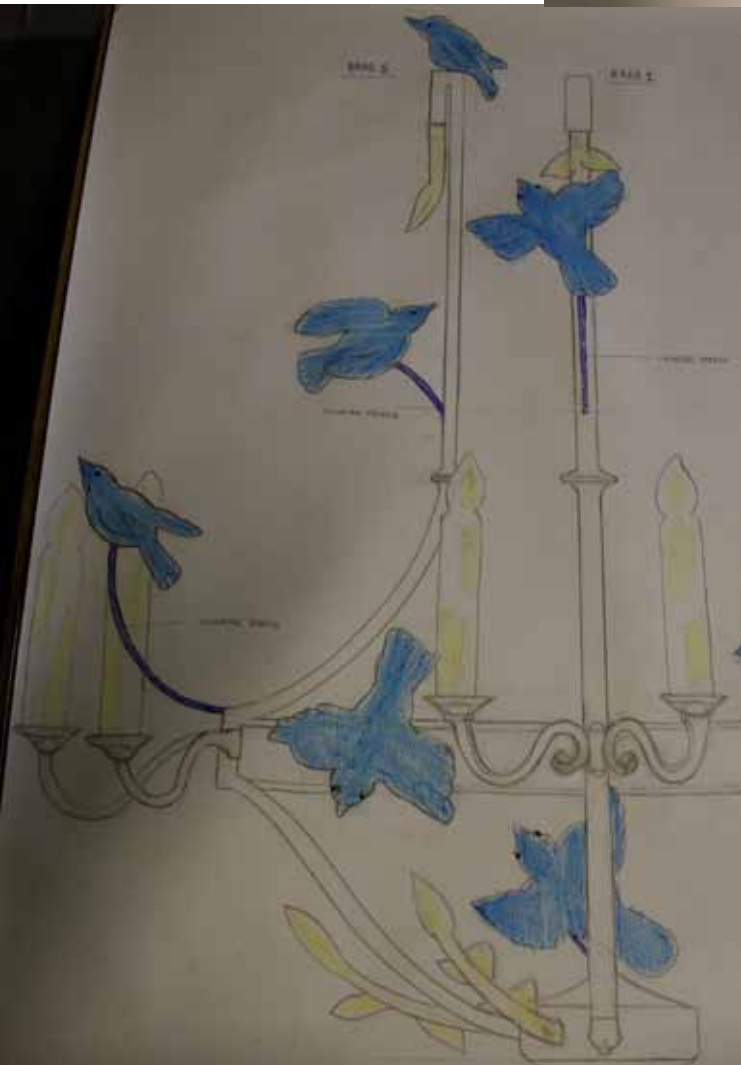
M A I T R E S V E R R I E R S

www.verreessentiel.com

VIENNGAN et VERRE L'ESSENTIEL
Verres en verre et bronze
Verrier. Doc. Verre L'Essentiel



LECTER: PMS DEBANDY L. KRISHNAN & M. S. SUNDAR
 COURSE: MPTAGRI WORKSHOP: VISION OF SCIENCE SEM: I & II
 PRACTICE: WATER DATE: 10/05/2024 PAGE: 9/10-15

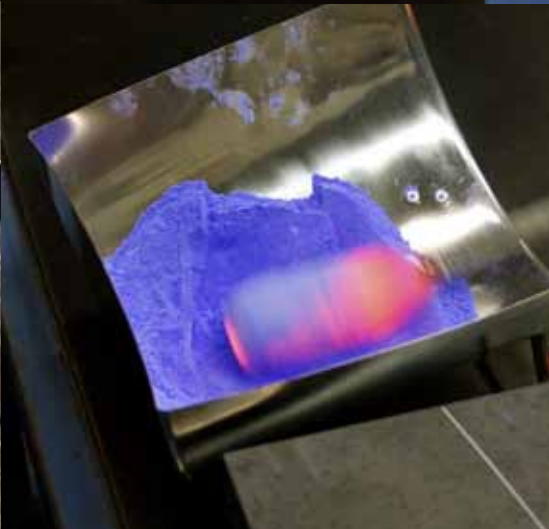
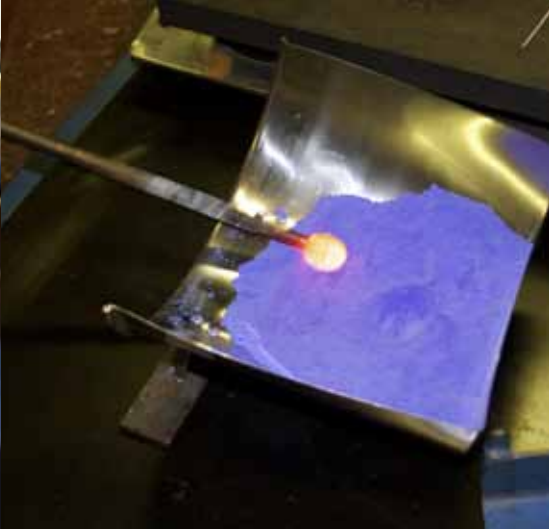




VERRE
ESSENTIEL



Birth of the Birds



*The floral motifs and the threads
on the birds' bodies are prepared in
advance. Each flower is made using
the "Millefiori" technique which
consists in building up a number of
layers of glass of varying colours.*





“Linking colours are woven into this living matter, which takes shape in a kind of ballet. When the glass sets, it’s a kind of “freeze frame” of life itself”.

Phillippa Martin



*“The improbable blue of the birds,
clad in flowers instead of feathers
are like messages. My almost
childlike “fauve” style expresses
joy and innocence, creating a
contrast with the symmetry of the
traditional chandelier.”*

Phillippa Martin



Birth of the Leaves



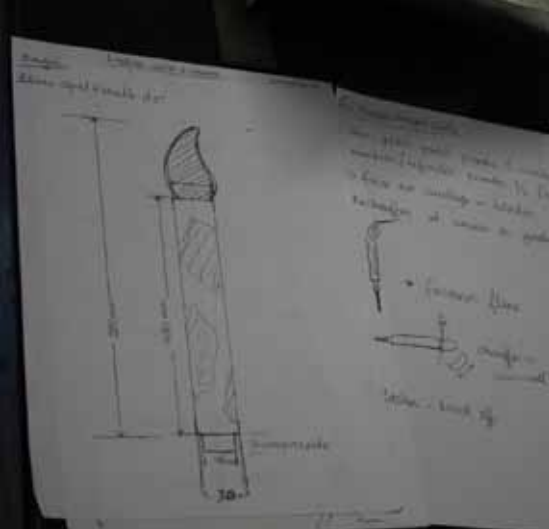




The choice of cobalt blue with red ochre highlights which adorn the bird's plumage challenges the imagination; it refers to the permanence of beauty which is supposed to inspire Mankind. The Blue Bird becomes part of the collective unconscious like a creature from contemporary mythology.



Birth of the Candles

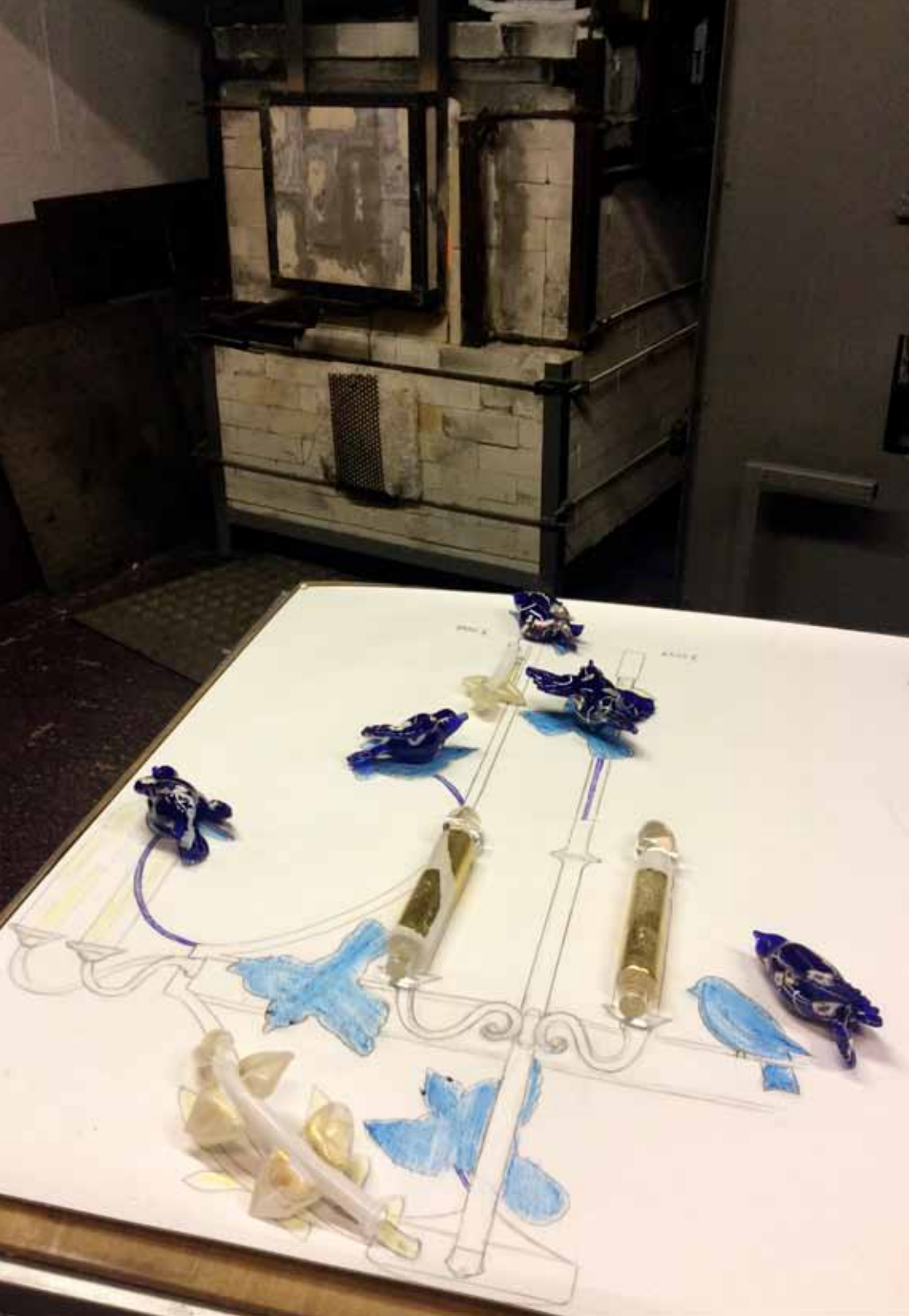




The glass candles add new life to classic lighting, making reference to the symbolic value of fire which is both the source of the light for historic chandeliers, and also the basic element needed to transform the materials which are used to make glass and bronze.









*“In my “ Bluebird Chandelier ”
piece I see the link between earth and
heaven. I make a parallel between
the upward impulse and an opening
of the heart. I see the chandelier as a
protective tree welcoming its occupants
with kindness.*

*I create a feeling of elevation: birds
flutter within the chandelier, rise and
fly off, enhancing this link in motion.”*

Phillippa Martin



© *idea, photography, graphic design & page layout :*
anja nerrings

